



**JOHN PSARRAS**  
**S&P CHARTERING**



IN PIRAEUS SINCE 1981

Ph:+30 210 4123696 4133931 4115482 Fx:+30 210 4170618  
E'Mail: psarras@psarrasj.gr Website:www.psarrasj.gr  
(Members of Hellenic Shipbrokers Association - 1984)

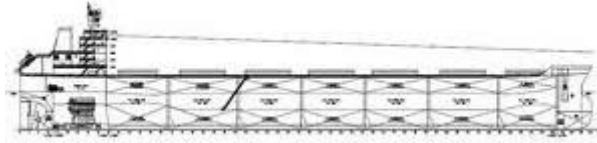
## **BI-MONTH REPORT**

### **MID FEBRUARY 2020**

**The scope of this report is to assist our clients and friends with a quick glance every about 15 days to get a feeling of the market by reading the more interesting sales in view of higher or lower prices of the main vessels types as well as the demolition prevailing prices.**

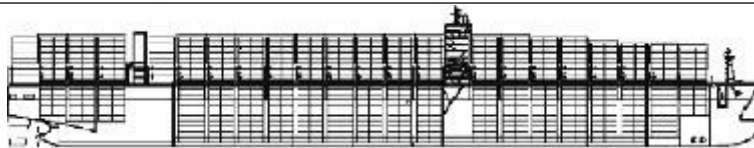


**Copyright:Edson de Lima Lucas**



## BULK CARRIERS

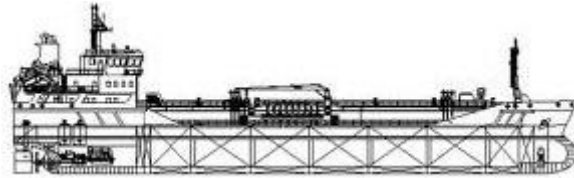
NAME	DWT	Y.O.B	P.O.B	PRICE
SHINYO ALLIANCE	176269	2005	JAPAN	14 MIL USD TO S.KOREANS
DUKE ORSINO	91439	2005	JAPAN	9,5 MIL USD TO CHINESE
ALAM PADU	87052	2005	JAPAN	10 MIL USD TO CHINESE
TOPEKA	74710	2000	CHINA	6 MIL USD TO CHINESE
WOORYANG QUEEN	71298	1997	JAPAN	4,5 MIL USD TO UNDISCLOSED
WHITE HAWK	60500	2012	JAPAN	15,2 MIL USD TO GREEKS
MARIANA MOBILANA	50655	1998	JAPAN	EN BLOC 10 MIL USD TO UNDISCLOSED
ARCADIA	50362	2002	CHINA	4,8 MIL USD TO CHINESE
HOKKAIDO BULKER	31858	2013	JAPAN	11 MIL USD TO UNDISCLOSED
DUBAI MOON-I	31800	2009	CHINA	6,3 MIL USD TO RUSSIANS
GENCO CHARGER	28400	2005	JAPAN	5,2 MIL USD TO UNDISCLOSED



## CONTAINER SHIPS

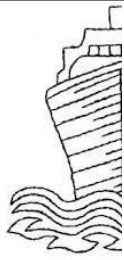
NAME	DWT	TEU	Y.O.B.	P.O.B	PRICE
MS HAWK	39418	2824	2007	S.KOREA	EN BLOC 19,6 MIL USD TO UNDISCLOSED
MS EAGLE	39276				
SAN FRANCISCO II	63355	4860	2009	S.KOREA	10,7 MIL USD TO GREEKS
GISELE A	35814	2763	2004	POLAND	6,8 MIL USD TO UAE BASED

WEHR SCHULAU	23026	1730	1999	POLAND	2,5 MIL USD TO UNDISCLOSED
GLORY FORTUNE	13979	1098	2006	CHINA	3,65 MIL USD TO UNDISCLOSED
AL WAAB	9131	515	2003	S.KOREA	1,6 MIL USD TO UNDISCLOSED



## TANKERS

NAME	DWT	HULL	Y.O.B	P.O.B.	PRICE
FRONT HAKATA	298465	DH	2002	JAPAN	31,5 MIL USD TO UAE BASED
SCF KHBINY	159196	DH	2002	S.KOREA	18,75 MIL USD TO GREEKS
SKS SALUDA	159460	DH	2003	S.KOREA	21,5 MIL USD TO UNDISCLOSED
FILIKON	149989	DH	2002	JAPAN	20,8 MIL USD TO GREEKS
ERAWAN 99	105715	DH	1999	JAPAN	7,4 MIL USD TO UNDISCLOSED
NANYANG STAR	104594	DH	2012	JAPAN	33 MIL USD TO BRITISH
ECO HOMBL HILLS ECO PALM DESERT	49703	DH	2018	VIETNAM	EN BLOC 70 MIL USD TO US BASED
HERMITAGE BRIDGE	47880	DH	2003	S.KOREA	10 MIL USD TO UNDISCLOSEDC
CELSIUS MUMBAI	19992	DH	2005	JAPAN	10,1 MIL USD TO VIETNAMESE
ADFINES STAR ADFINES SEA	19118	DH	2011	CHINA	EN BLOC 24 MIL USD TO CANADIANS
YUHO MARU	5485	DH	2012	JAPAN	7 MIL USD TO SINGAPOREANS



# DEMOLITION



## BANGLADESH

NAME	LDT	DWT	Y.O.B	P.O.B.	PRICE
PACIFIC OPAL	37399	278158	1995	S.KOREA	396 USD PER LDT
SUPERTTRAMP	7281	24834	2001	CHINA	380 USD PER LDT



## INDIA

NAME	LDT	DWT	Y.O.B	P.O.B.	PRICE
BLACK EAGLE	13419	32709	1983	FRANCE	362 USD PER LDT
PURKI	4969	12835	1992	GERMANY	412 USD PER LDT



## PAKISTAN

NAME	LDT	DWT	Y.O.B	P.O.B.	PRICE
PANTANASSA	7884	30812	1996	CHINA	384 USD PER LDT

### **Disclaimer**

All information stated in this report has been collected from a variety of maritime sources and is presented in good faith and without any guarantee from our part .

J. PSARRAS S+P CHARTERING, shall not accept any responsibility for any errors and/or omissions arising from this report and cannot be held responsible for any action taken and/or losses occurred as a result of the details included in this report.

Recirculation of same is not permitted without the written agreement of the aforementioned company, which is the only

entitled one to produce copies of same.