



JOHN PSARRAS
S&P CHARTERING



IN PIRAEUS SINCE 1981

Ph:+30 210 4123696 4133931 4115482 Fx:+30 210 4170618

E'Mail: psarras@psarrasj.gr Website:www.psarrasj.gr
(Members of Hellenic Shipbrokers Association - 1984)

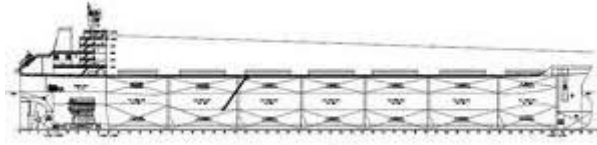
BI-MONTH REPORT

END NOVEMBER 2020

The scope of this report is to assist our clients and friends with a quick glance every about 15 days to get a feeling of the market by reading the more interesting sales in view of higher or lower prices of the main vessels types as well as the demolition prevailing prices.

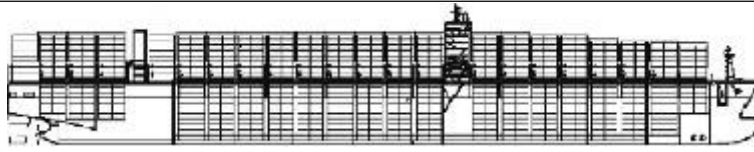


Copyright:Eddie Walker



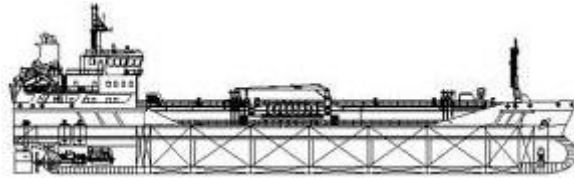
BULK CARRIERS

| NAME | DWT | Y.O.B | P.O.B | PRICE |
|---|----------------------------------|------------------------------|---------|-----------------------------------|
| SEN-OKU | 206306 | 2006 | JAPAN | 15 MIL USD TO CHINESE |
| INA | 176423 | 2003 | JAPAN | 9 MIL USD TO GREEKS |
| NIRAI | 91443 | 2003 | JAPAN | ABT 7,5 MIL USD TO CHINESE |
| LEDA | 82165 | 2013 | JAPAN | 16,1 MIL USD TO GREEKS |
| SBI JIVE SBI SWING SBI MAZURKA SBI REGGAE | 81252 81237 81232 81214 | 2017 | CHINA | ABT 82 MIL USD TO UNDISCLOSED |
| HAI LU | 76629 | 2004 | JAPAN | ABT 7,7 MIL USD TO CHINESE |
| SBI ANTARES SBI BRAVO SBI HYDRA SBI MAIA | 61593 61587 61115 61105 | 2015 | CHINA | EN BLOC 67 MIL USD TO UNDISCLOSED |
| ASIA EMERALD I ASIA EMERALD IV | 58018 | 2011 2012 | CHINA | EN BLOC 18,2 MIL USD TO CHINESE |
| GMB ATHENA GMB ARTEMIS GMB ALCMENE CMG ASTERIA | 53000 | 2010 2009 2009 2010 | CHINA | EN BLOC 34 MIL USD TO CHINESE |
| KAVO PLATANOS | 56759 | 2011 | CHINA | 9,4 MIL USD TO CHINESE |
| NITON COBALT | 52471 | 2004 | JAPAN | 5,5 MIL USD TO UNDISCLOSED |
| HAWK I | 50296 | 2001 | JAPAN | 4,4 MIL USD TO CHINESE |
| BAO SHUN | 28799 | 1997 | JAPAN | 2,7 MIL USD TO CHINESE |
| SEXTA | 18367 | 2000 | S.KOREA | 1,7 MIL USD TO UNDISCLOSED |



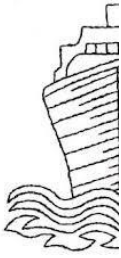
CONTAINER SHIPS

| NAME | DWT | TEU | Y.O.B. | P.O.B | PRICE |
|------------------------------|-------|------|--------|---------|---------------------------------|
| MIRAMARIN | 85522 | 6574 | 2010 | S.KOREA | 27,5 MIL USD TO S.KOREANS |
| UNIFLORIDA | 42950 | 3450 | 2007 | S.KOREA | 10 MIL USD TO UNDISCLOSED |
| SINAR SUMBA SINAR SABANNG | 23350 | 1740 | 2008 | CHINA | EN BLOC 13,5 MIL USD TO GERMANS |
| NORDEMILIA NORDCLAIRE | 23476 | 1756 | 2016 | CHINA | EN BLOC 33,8 MIL USD TO ASIANS |



TANKERS

| NAME | DWT | HULL | Y.O.B | P.O.B. | PRICE |
|--------------------------|------------------|------|-------|------------------|--|
| JING GANG SAN | 318448 | DH | 2013 | CHINA | 45,25 MIL USD TO GREEKS |
| POSEIDON I | 305796 | DH | 2002 | S.KOREA | 26 MIL USD TO CHINESE |
| SRI VISHNU | 152923 | DH | 2000 | S.KOREA | ABT 11 MIL USD TO CHINESE |
| JAG LAADKI JAG LATEEF | 150284 147080 | DH | 2000 | JAPAN S.KOREA | EN BLOC 24.8 MIL USD TO CHINESE |
| ANTARCTICA | 114849 | DH | 2006 | S.KOREA | 15,5 MIL USD TO UNDISCLOSED |
| BERGINA | 105839 | DH | 2007 | JAPAN | 17,4 MIL USD TO VIETNAMESE |
| CHAMPION PRINCE | 105258 | DH | 2012 | S.KOREA | 24,5 MIL USD TO GREEKS |
| GUNESHLI | 104403 | DH | 2002 | JAPAN | 8,5 MIL USD TO RUSSIANS |
| TORM CAMILLA | 46219 | DH | 2003 | S.KOREA | 9,8 MIL USD TO CHINESE |



DEMOLITION



BANGLADESH

| NAME | LDT | DWT | Y.O.B | P.O.B. | PRICE |
|--------------|------|-------|-------|---------|--------------------------|
| PROJECT LINK | 8872 | 45018 | 1989 | S.KOREA | 385 USD PER LDTNNE |



INDIA

| NAME | LDT | DWT | Y.O.B | P.O.B. | PRICE |
|-------------|------|------|-------|-----------|-----------------------|
| SMOLNINSKIY | 1835 | 1557 | 1990 | LITHUANIA | 382 USD PER LDT |



PAKISTAN

| NAME | LDT | DWT | Y.O.B | P.O.B. | PRICE |
|-----------|-------|--------|-------|---------|--------------------------|
| PAC ACRUX | 10626 | 27420 | 2003 | CHINA | 393 USD PER LDT |
| SAM | 42515 | 300482 | 1996 | S.KOREA | 365 USD PER LDT |
| AL FAHED | 1801 | 3321 | 1969 | GERMANY | 305 USD PER LDT |

Disclaimer

All information stated in this report has been collected from a variety of maritime sources and is presented in good faith and without any guarantee from our part .

J. PSARRAS S+P CHARTERING, shall not accept any responsibility for any errors and/or omissions arising from this report and cannot be held responsible for any action taken and/or losses occurred as a result of the details included in this report.

Recirculation of same is not permitted without the written agreement of the aforementioned company, which is the only entitled one to produce copies of same.