



JOHN PSARRAS
S&P CHARTERING



IN PIRAEUS SINCE 1981

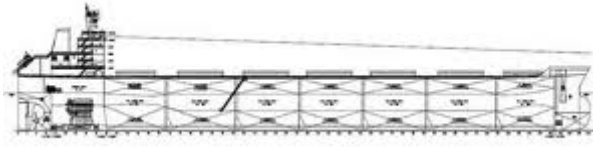
Ph:+30 210 4123696 4133931 4115482 Fx:+30 210 4170618
E'Mail: psarras@psarrasj.gr Website:www.psarrasj.gr
(Members of Hellenic Shipbrokers Association - 1984)

BI-MONTH REPORT

MID JANUARY 2016

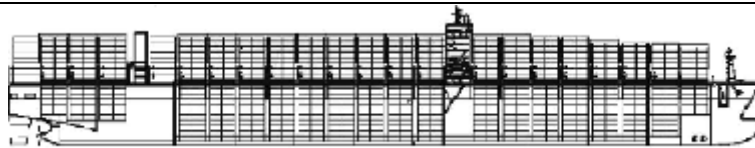
The scope of this report is to assist our clients and friends with a quick glance every about 15 days to get a feeling of the market by reading the more interesting sales in view of higher or lower prices of the main vessels types as well as the demolition prevailing prices.





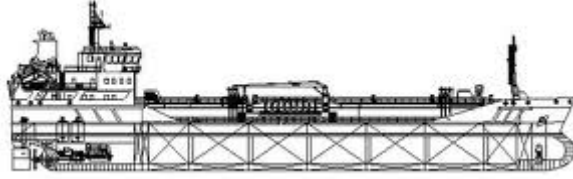
BULK CARRIERS

| NAME | DWT | Y.O.B | P.O.B | PRICE |
|--------------------------------------|--------|-------|---------|----------------------------------|
| FAUSTINA | 177775 | 2010 | CHINA | 19 MIL USD TO GREEKS |
| SBI BEHIKE SBI MONTECRISTO | 180000 | 2015 | S.KOREA | EN BLOC 68 MIL USD TO NORWEGIANS |
| STAR TAURUS STAR ARIES JENMARK | 180000 | 2015 | CHINA | EN BLOC 111 MIL USD TO GREEKS |
| NORD POWER | 176300 | 2005 | JAPAN | 12,25 MIL USD TO GREEKS |
| CANON TRADER I | 81761 | 2013 | CHINA | 14,5 MIL USD TO US BASED |
| GAURI PREM | 74405 | 2007 | CHINA | 7,4 MIL USD TO UNDISCLOSED |
| SBI PREM APARNA | 73461 | 2001 | JAPAN | 4,5 MIL USD TO UNDISCLOSED |
| CELESTE | 46670 | 1999 | JAPAN | 3,8 MIL USD TO GREEKS |
| STOVE TRANSPORT | 46223 | 1998 | JAPAN | 3,5 MIL USD TO UNDISCLOSED |
| OCEAN JEWEL | 37186 | 2012 | S.KOREA | 9 MIL USD TO TURKISH |
| LAURA BULKER | 31890 | 2008 | JAPAN | 7,5 MIL USD TO TURKISH |
| ECO DISCOVERY | 31784 | 1999 | JAPAN | 4 MIL USD TO EUROPEANS |



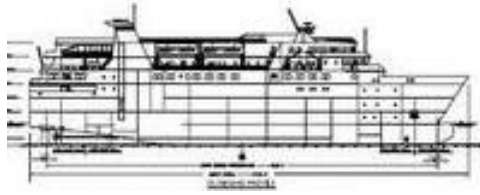
CONTAINER SHIPS

| NAME | DWT | TEU | Y.O.B. | P.O.B | PRICE |
|-------------------------------|----------------|------|--------|-------|-------------------------------|
| NORDIC STANI NORDIC PHILIP | 13200 13031 | 1036 | 2010 | CHINA | EN BLOC 22 MIL USD TO CHINESE |



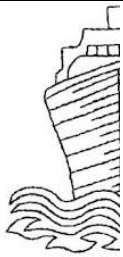
TANKERS

| NAME | DWT | HULL | Y.O.B | P.O.B. | PRICE |
|-----------------------------------|--------|------|--------------|----------|---|
| HEMSEDAL SPIRIT VOSS SPIRIT | 314000 | DH | 2010 | S.KOREA | EN BLOC 155 MIL USD TO SAUDI ARABIANS |
| FAMMENE | 298412 | DH | 2001 | JAPAN | 38 MIL USD TO UNDISCLOS ED |
| DHT TRADER | 152953 | DH | 2000 | S.KOREA | 26.5 MIL USD TO UNDISCLOS ED |
| PETROKREPOST | 105567 | DH | 1999 | S.KOREA | 15 MIL USD TO MIDDLEAST ERNS |
| CPO JAPAN CPO KOREA | 51747 | DH | 2010 2009 | S.KOREA | EN BLOC 56 MIL USD TO GREEKS |
| GENER8 CONSUL | 47171 | DH | 2004 | CROATIA | 17,5 MIL USD TO NORWEGIA NS |
| CIELO DI SALERNO | 36032 | DH | 2002 | S.KOREA | 13 MIL USD TO UNDISCLOS ED |
| MAR ADRIANA | 18736 | DH | 2002 | SPAIN | 11,5 MIL USD TO GREEKS |
| LODESTAR GRACE | 14298 | DH | 2002 | JAPAN | 11 MIL USD TO SINGAPORE ANS |
| CHEM VEGA | 10300 | DH | 1998 | JAPAN | 5,9 MIL USD TO TAIWANESE |
| CHULAN 1 CHULAN 2 CHULAN 3 | 7299 | DH | 2011 | MALAYSIA | EN BLOC 17,1 MIL USD TO MALAYSIAN S |
| CARBONIAN FRONTIER | 2114 | DH | 2012 | JAPAN | 6,5 MIL USD TO S.KOREANS |



PASSENGER SHIPS/RO/RO /CRUISE SHIPS

| NAME | DWT | Y.O.B | P.O.B | PRICE |
|--------|-------|-------|---------|-----------------------|
| HELENA | 12967 | 1991 | S.KOREA | 7 MIL USD TO ITALIANS |



DEMOLITION



BANGLADESH

| NAME | LDT | DWT | Y.O.B | P.O.B. | PRICE |
|--------------------|-------|--------|-------|---------|-----------------|
| ALPHA FRIENDSHIP | 19525 | 161524 | 1996 | S.KOREA | 280 USD PER LDT |
| SILVER MASTER | 19244 | 158387 | 1996 | JAPAN | 288 USD PER LDT |
| HANJIN NEW ORLEANS | 9996 | 70337 | 1994 | S.KOREA | 275 USD PER LDT |
| RIRUCCIA | 9733 | 73000 | 1997 | JAPAN | 283 USD PER LDT |



| NAME | LDT | DWT | Y.O.B | P.O.B. | PRICE |
|---------|-------|-------|-------|---------|-----------------|
| VISTA I | 16500 | 67980 | 1984 | UKRAINE | 290 USD PER LDT |



| NAME | LDT | DWT | Y.O.B | P.O.B. | PRICE |
|---------------|-------|-------|-------|--------|---|
| TRUSTWORTHY | 5512 | 17720 | 1977 | JAPAN | 275 USD PER LDT |
| SANSHU MARU | 11000 | 88495 | 1991 | JAPAN | 230 USD PER LDT (green recycling) |
| COMMODORE | 12851 | 35600 | 2001 | POLAND | 323 USD PER LDT (305 was also reported) |
| SAMJOHN LIGHT | 9970 | 71756 | 1994 | JAPAN | 328 USD PER LDT |

Disclaimer

All information stated in this report has been collected from a variety of maritime sources and is presented in good faith and without any guarantee from our part .

J. PSARRAS S+P CHARTERING, shall not accept any responsibility for any errors and/or omissions arising from this report and cannot be held responsible for any action taken and/or losses occurred as a result of the details included in this report.

Recirculation of same is not permitted without the written agreement of the aforementioned company, which is the only entitled one to produce copies of same.