



**JOHN PSARRAS**  
**S&P CHARTERING**



IN PIRAEUS SINCE 1981

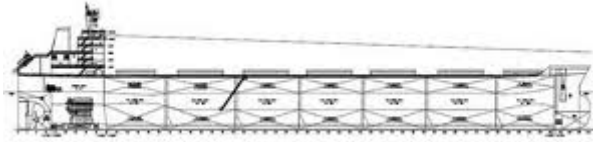
Ph:+30 210 4123696 4133931 4115482 Fx:+30 210 4170618  
E'Mail: psarras@psarrasj.gr Website:www.psarrasj.gr  
(Members of Hellenic Shipbrokers Association - 1984)

## **BI-MONTH REPORT**

### **MID DECEMBER 2016**

**The scope of this report is to assist our clients and friends with a quick glance every about 15 days to get a feeling of the market by reading the more interesting sales in view of higher or lower prices of the main vessels types as well as the demolition prevailing prices.**





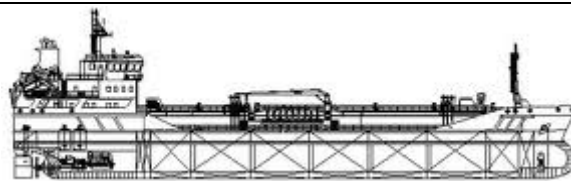
## BULK CARRIERS

NAME	DWT	Y.O.B	P.O.B	PRICE
ORE BELO HORIZONTE ORE PARA ORE MANGARATIBA ORE PANTANAL	180000 180000 179835 179835	2011 2011 2011 2010	S.KOREA	EN BLOC 86 MIL USD TO TURKISH
BULK HONG KONG	180230	2006	JAPAN	13,8 MIL USD TO GREEKS
HANJIN PORT WALCOTT HANJIN NEWCASTLE	180012	2012 2011	S.KOREA	43 MIL USD TO GREEKS
BSI CADOGAN	81277	2016	CHINA	20 MIL USD TO UNDISCLOSED
ANTONIS	81510	2013	S.KOREA	16 MIL USD TO UNDISCLOSED
GUAN LAN HU	75924	2001	JAPAN	5,1 MIL USD TO UNDISCLOSED
THELISIS	58814	2010	S.KOREA	11,2 MIL USD TO UNDISCLOSED
AMETHYST	56589	2011	CHINA	9,2 MIL USD TO GREEKS
INGWAR SELMER	55733	2011	JAPAN	13,5 MIL USD TO GREEKS
ANASSA IOANNA	53125	2003	JAPAN	6,8 MIL USD TO UNDISCLOSED
AURORA CHRISTINE	46709	2000	JAPAN	4,9 MIL USD TO UNDISCLOSED
PUFFIN	37301	2003	CHINA	4 MIL USD TO UNDISCLOSED
CIELO DI LIVORNO	37277	2008	JAPAN	9 MIL USD TO UNDISCLOSED
EAST AMBITION	28378	2000	JAPAN	3,8 MIL USD TO UNDISCLOSED
QIN FENG 180	21503	2009	CHINA	4,2 MIL USD TO CHINESE



## CONTAINER SHIPS

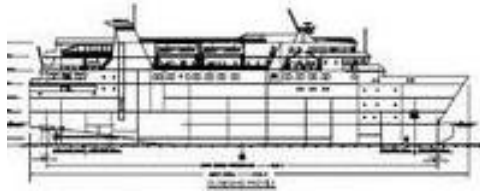
NAME	DWT	TEU	Y.O.B.	P.O.B	PRICE
UASC ZAMZAM	112171	8386	2014	S.KOREA	78 MIL USD TO UNDISCLOSED
HANJIN MONACO HANJIN KINGSTON HANJIN ATLANTA HANJIN GDYNIA	51000	4275	2009	S.KOREA	EN BLOC 20,8 MIL USD TO HONG KONG BASED
STADT MARBURG STADT FREIBURG STADT COBURG	54405	4380	2009 2010 2010	S.KOREA	EN BLOC 54 MIL USD TO S.KOREAN
SARANG MOUNT HALLOWERS	21900	1700	2016	CHINA	27,6 MIL USD TO ALGERIANS



## TANKERS

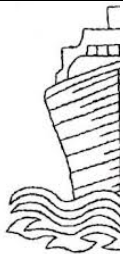
NAME	DWT	HULL	Y.O.B	P.O.B.	PRICE
GENER8 ULYSSES	304985	DH	2003	S.KOREA	31 MIL USD TO DUTCH BUYERS
GENER8 SPYRIDON	159959	DH	2000	S.KOREA	15 MIL USD TO GREEKS
RATNA SHALINI RATNA NAMRATA RATNA SHRADHA RATNA SHRUTI	105900	DH	2010 2008	S.KOREA	EN BLOC 92,5 MIL TO UNDICLOS ED

BRITISH LIBERTY BRITISH UNITY BRITISH LOYALTY	46803	DH	2004	S.KOREA	EN BLOC 37,2 MIL USD
EMA QUERIDA ROYAL NATURA ROYAL FLOS STRILEN	19998 19998 19996 19996	DH	2008	S.KOREA	EN BLOC 58,6 MIL USD TO UNDISCLO SED



### PASSENGER SHIPS/RO/RO /CRUISE SHIPS

NAME	DWT	Y.O.B	P.O.B	PRICE
LA PAZ STAR	5455	1978	S.KOREA	ABT 2 MIL USD TO GREEKS



## DEMOLITION



### TURKEY

NAME	LDT	DWT	Y.O.B	P.O.B.	PRICE
EFSTRATIOS	1643	3138	1977	GERMANY	P&C



### BANGLADESH

NAME	LDT	DWT	Y.O.B	P.O.B.	PRICE
STAR DESPOINA	21472	170162	1999	S.KOREA	315 USD PER LDT
AUGUSTE SCHULTE	11178	34622	2002	S.KOREA	295 USD PER

AS TAMINA	10850	33914	1998	GERMANY	LDT 290 USD PER LDT
CITY OF TOKYO	12393	12730	1987	S.KOREA	305 USD PER LDT



## CHINA

NAME	LDT	DWT	Y.O.B	P.O.B.	PRICE
SUNNY NAPIER II	6282	23482	1993	JAPAN	260 USD PER LDT



## PAKISTAN

NAME	LDT	DWT	Y.O.B	P.O.B.	PRICE
GIORGOS B	7527	45697	1994	JAPAN	289 USD PER LDT



## INDIA

NAME	LDT	DWT	Y.O.B	P.O.B.	PRICE
CORAL ACE	7196	47286	1999	JAPAN	240 USD PER LDT
MSC CAROLE	23450	60640	1989	DENMARK	295 USD PER LDT

### **Disclaimer**

All information stated in this report has been collected from a variety of maritime sources and is presented in good faith and without any guarantee from our part .

J. PSARRAS S+P CHARTERING, shall not accept any responsibility for any errors and/or omissions arising from this report and cannot be held responsible for any action taken and/or losses occurred as a result of the details included in this report.

Recirculation of same is not permitted without the written agreement of the aforementioned company, which is the only entitled one to produce copies of same.