



J.PSARRAS S+P ,CHART-PIRAEUS (since 1981)

Ph:+30 210 4123696 4133931 4115482

Fx:+30 210 4170618

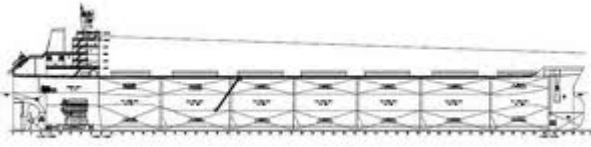
E'Mail: psarras@psarrasj.gr Website: www.psarrasj.gr
(Members of Hellenic Shipbrokers Association - 1984)

BI-MONTH REPORT

END AUGUST 2015

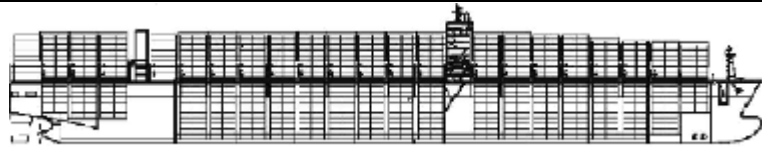
The scope of this report is to assist our clients and friends with a quick glance every about 15 days to get a feeling of the market by reading the more interesting sales in view of higher or lower prices of the main vessels types as well as the demolition prevailing prices.





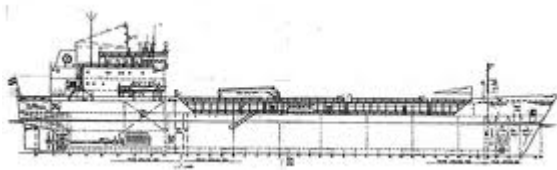
BULK CARRIERS

NAME	DWT	Y.O.B	P.O.B	PRICE
BAO ZHU HAI	180310	2004	JAPAN	18,6 MIL USD TO CHINESE
GLORIUS	171314	2004	JAPAN	EN BLOC 183 MIL USD TO GREEKS
ETERNUS	170000	2010	CHINA	
GENEROUS	170000	2010	CHINA	
GENIOUS	170000	2010	CHINA	
MAXIMUS	170000	2011	CHINA	
GLADIATOR	57000	2012	CHINA	
MYSTIC STRIKER	57000	2011	CHINA	
NORTH FORTUNE III	91439	2000	JAPAN	8,9 MIL USD TO CHINESE
UNITED JOURNEY	82580	2009	JAPAN	18 MIL USD TO GREEKS
GRAIN PEARL	81630	2013	CHINA	17 MIL USD TO GREEKS
PINCHAT	81290	2012	S.KOREA	21,5 MIL USD TO GREEKS
STAR NICOLE	73800	1997	JAPAN	3,7 MIL USD TO FAR EASTERN
MARITIME PUTIAN	73652	2000	JAPAN	5 MIL USD TO UNDISCLOSED
SAINTY VIRTUE SAINTY VOYAGER	63300 63300	2015	CHINA	EN BLOC 39,8 MIL USD TO DANISH
SKOMVAER	58000	2010	CHINA	12,75 MIL USD TO GREEKS
FORCE RANGER	45950	1996	TAIWAN	4 MIL USD TO MIDDLE-EASTERN
DS COMMANDER	45500	1994	JAPAN	3,4 MIL USD TO GREEKS
ECO VANGUARD	28492	2001	JAPAN	6,2 MIL USD TO FAR EASTERN
BREEZE ISLAND	28367	2011	JAPAN	10,2 MIL USD TO GREEKS



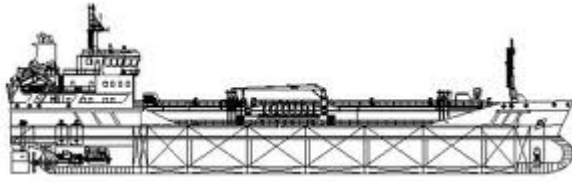
CONTAINER SHIPS

NAME	DWT	TEU	Y.O.B.	P.O.B	PRICE
E.R. MALMO	39200	2824	2005	S.KOREA	13,9 MIL USD TO S.KOREANS
LEO OSAKA	43093	2762	2003	JAPAN	9,2 MIL USD TO UNDISCLOSED
PONENTE PORTOFINO	23000	1730	2002	POLAND	EN BLOC 15 MIL USD TO NORWEGIANS
HANSA KRISTIANSAND	20444	1550	2001	CHINA	6,1 MIL USD TO GREEKS
HANSA AALESUND	20461	1550	2001	CHINA	6,1 MIL USD TO GERMANS



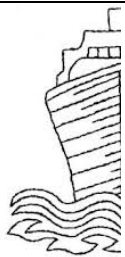
GENERAL CARGO

NAME	DWT	Y.O.B	P.O.B	PRICE
ALERT	13347	1999	JAPAN	2,3 MIL USD TO INDIANS
PYTHIA	6830	1998	JAPAN	2,4 MIL USD TO MIDDLE EASTERN



TANKERS

NAME	DWT	HULL	Y.O.B	P.O.B.	PRICE
FRONT SPLENDOUR	149745	DH	1995	JAPAN	16 MIL USD TO GERMANS
MATTEA	126630	DH	1997	S.KOREA	11 MIL USD TO UNDISCLOS ED
CPO JAPAN CPO KOREA	52000	DH	2010 2009	S.KOREA	EN BLOC 56,25 MIL USD TO UNDISCLOS ED
BERING SEA AZOV SEA	47431 47363	DH	1998	CROATIA	SOLD TO BRITISH AND GREEK BUYERS 8- 8,5 MIL USD EACH RESPECTIV ELY
ESHIPS DUGON	13147	DH	2007	S.KOREA	11,2 MIL USD TO SOUTH AMERICANS
CONSORT JUSTICE	4999	DH	1999	JAPAN	3,2 MIL USD TO UNDISCLOS ED



DEMOLITION



BANGLADESH

NAME	LDT	DWT	Y.O.B	P.O.B.	PRICE
AMSIR	.11290	55781	1988	JAPAN	330 USD PER LDT
MARSI	9040	45090	1984	UNITED KINGDOM	330 USD PER LDT
PUTRI ASIA	1339	3421	1978	JAPAN	277 USD PER LDT



NAME	LDT	DWT	Y.O.B	P.O.B.	PRICE
C ROYAL	17992	151044	1996	JAPAN	323 USD PER LDT
REBBEKA N	36615	249738	1990	S.KOREA	325 USD PER LDT



NAME	LDT	DWT	Y.O.B	P.O.B.	PRICE
UMAY	5530	22447	1986	UNITED KINGDOM	316,5 USD PER LDT
ATLANTIC COMPANION	ABOUT 26500	51648	1984	SWEDEN	320 USD PER LDT

Disclaimer

All information stated in this report has been collected from a variety of maritime sources and is presented in good faith and without any guarantee from our part .

J. PSARRAS S+P CHARTERING, shall not accept any responsibility for any errors and/or omissions arising from this report and cannot be held responsible for any action taken and/or losses occurred as a result of the details included in this report.

Recirculation of same is not permitted without the written agreement of the aforementioned company, which is the only entitled one to produce copies of same.